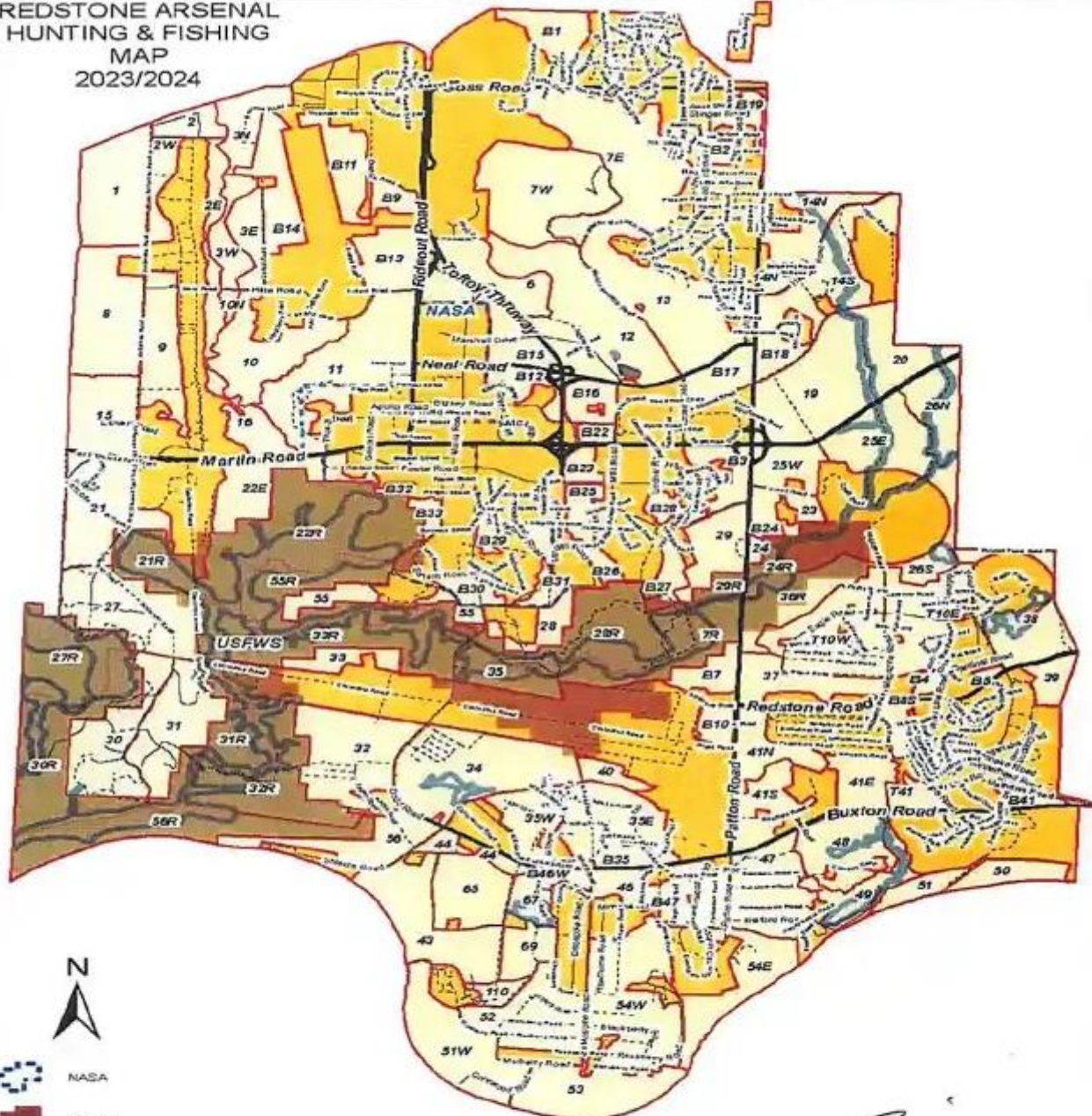


**REDSTONE ARSENAL
HUNTING & FISHING
MAP
2023/2024**



-  NASA
-  USFWS
-  Fishing Area

- Hunting Areas**
-  Open
 -  Restricted

Hunting is Prohibited in Wheeler National Wildlife Refuge Except on Special Hunts as Authorized by O&A Orders.

DISCLAIMER:
This map and the data contained within is not authorized for public release. The map should be displayed only for internal purpose has been completed. For questions or concerns contact Redstone Arsenal Department of Public Works.


Brian Cozine
COL, LG
Commanding



US Army Garrison - Redstone
Redstone Arsenal, Alabama

REGULATED INSTALLATION WIDE GROUNDWATER LAND USE CONTROLS EXIST. BONGS ARE PLACED NEAR SEEPS AND SPRINGS WARNING - CONTAMINATED GROUNDWATER SPRING LOCATED NEARBY WATER NOT SUITABLE FOR DRINKING.